

# Landscape Approach to Riverine Forest Restoration, Biodiversity Conservation and Livelihood Improvement - Sudan



The Objective

Target landscapes



The Challenge

Interventions

# The Objective

- Restore and maintain critical ecosystem services of globally significant riverine forest landscapes along the River Nile in Sudan



**50,878 ha** of riverine forest ecosystems managed to benefit biodiversity and maintain productive value.

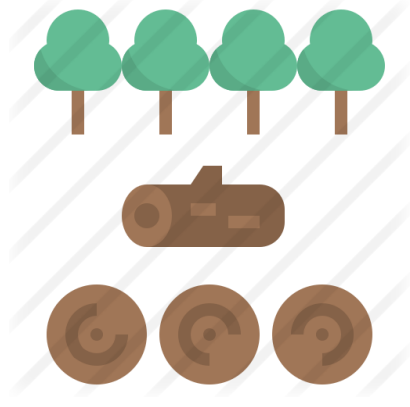


**20,000** smallholders and private producers (10,000 female/10,000 male) reporting stable or improved standard of living resulting from biodiversity conservation mainstreaming

# The Challenge



*Agricultural Expansion  
and Irrigation*



*Unsustainable Harvest of  
timber and NTFPs*



*Climate Change*



*Nile River Flow*



*Habitat Alteration*



*Loss of livelihoods*



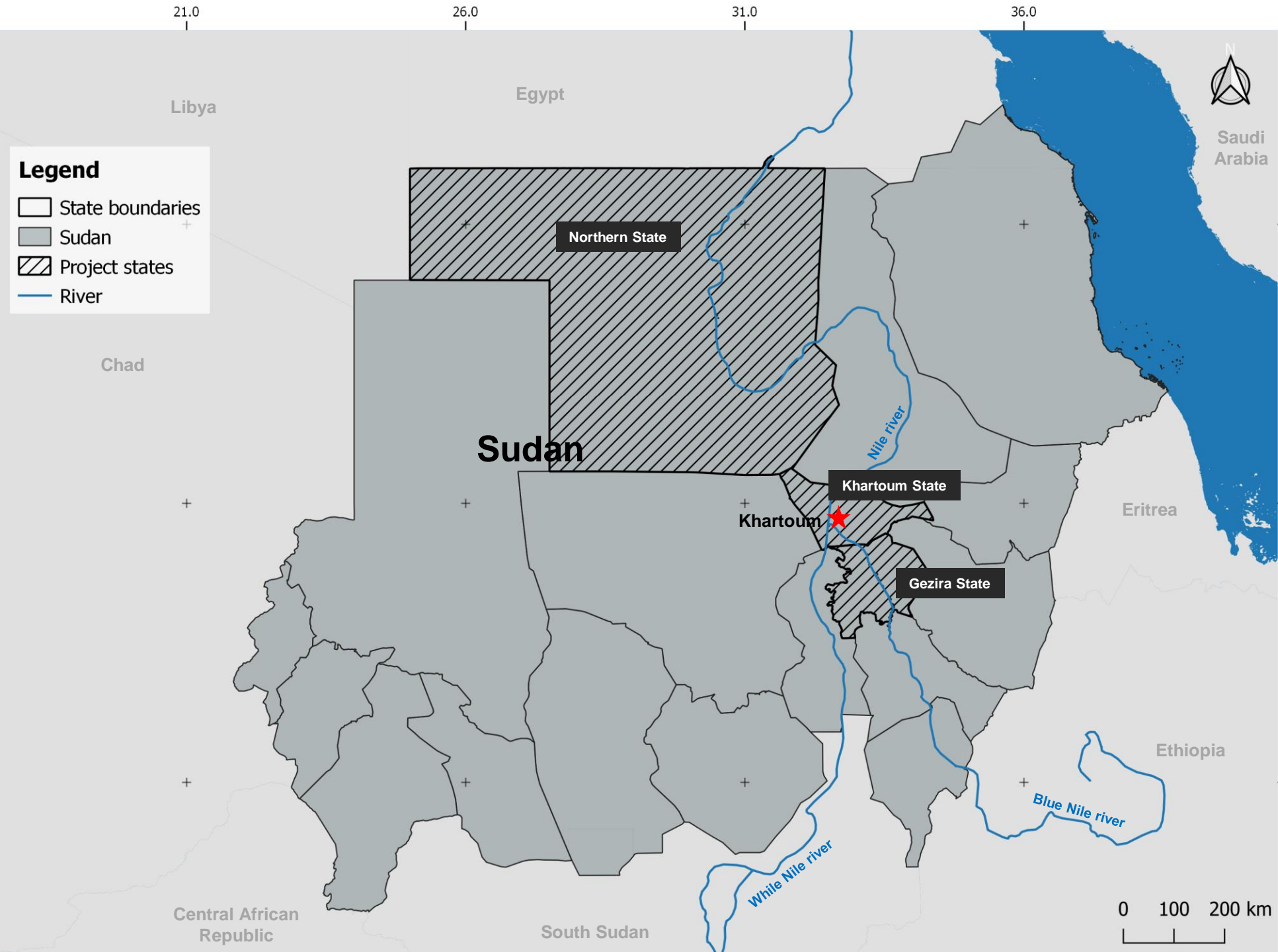
*Food security*



*Innovative NRM  
approaches*

**Legend**

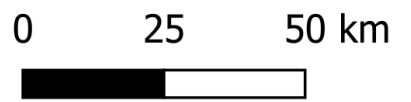
- State boundaries
- Sudan
- Project states
- River

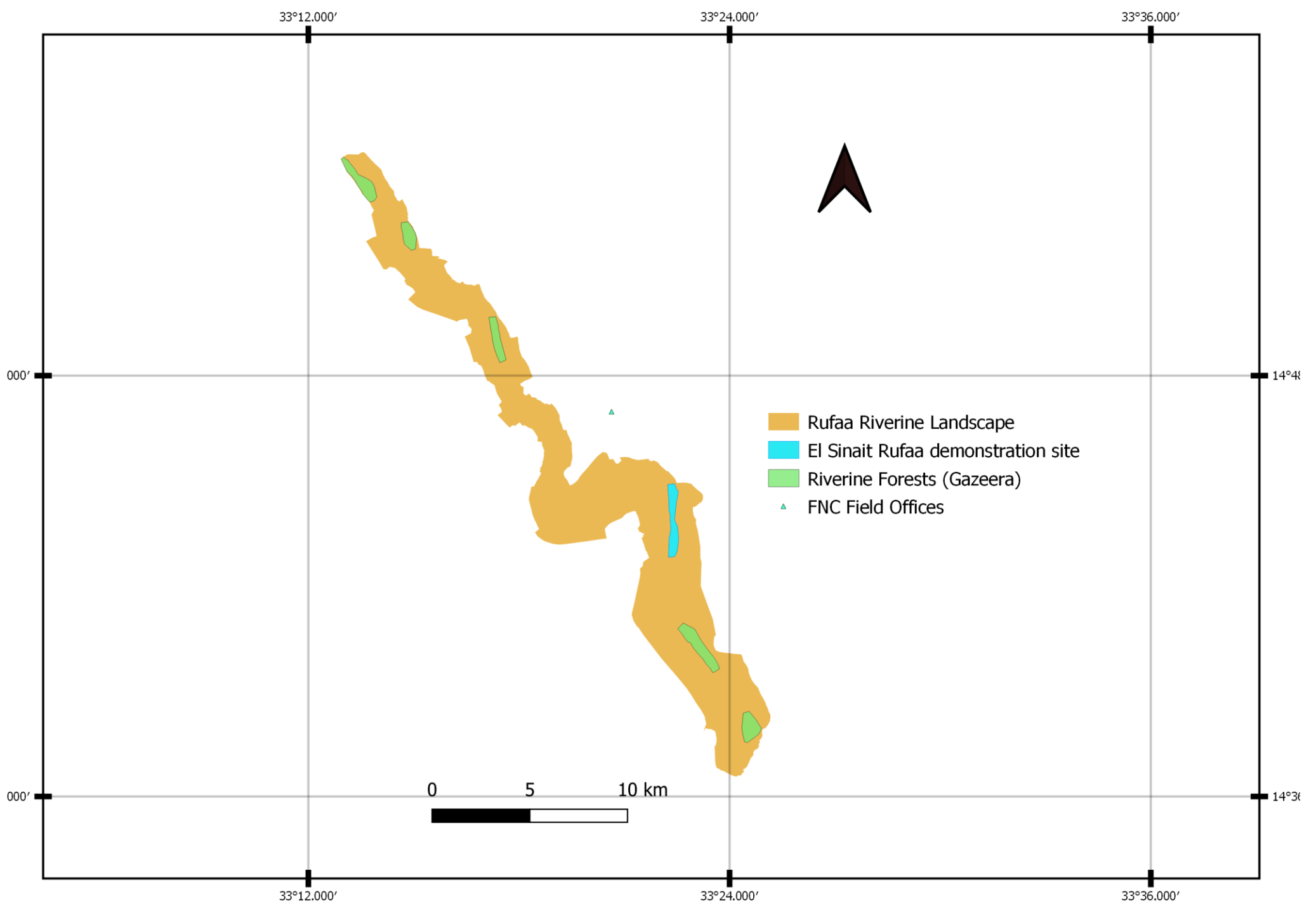


# Target Landscapes



-  Gazeera State
-  Rufaa Riverine Landscape
-  Wad Madani Riverine Landscape
-  Haj Abdallah Riverine Landscape
-  Riverine Forests (Gazeera)
-  Riverine Forests (Sennar)
-  FNC Field Offices









السط

Victory Bridge

Central Bank of Sudan  
بنك السودان المركزي

Khartoum Garden  
الحديقة النباتية

Friendship Hall  
قاعة الصداقة

Al Neelain University  
جامعة النيلين

52nd St

Sudan University  
Of Science &  
Technology  
جامعة السودان  
للعلوم  
والتكنولوجيا  
الغابية

Al-Gandool  
الغندول

Al Sunut  
Forest  
غابة السط

Al-Ghaba Ave

National gas station  
محطة نفود الوطنية

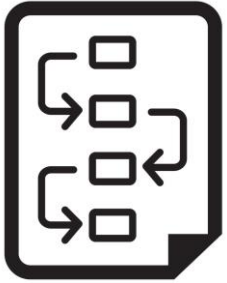
شبكة حديد

each  
رواق

White Nile



# Interventions



*Planning*

- Ecological, social and economic assessments of riverine ecosystems
- Updates Forest Reserve management plans
- Spatial planning and Community action plans



*Demonstration*

- Biodiversity conservation training programs
- Conservation and restoration demonstration program



*Informed Decision  
Making*

- Ecosystem-based monitoring and knowledge management
- Improved institutional frameworks to sustain and amplify results

# Thank you

